

Name Key

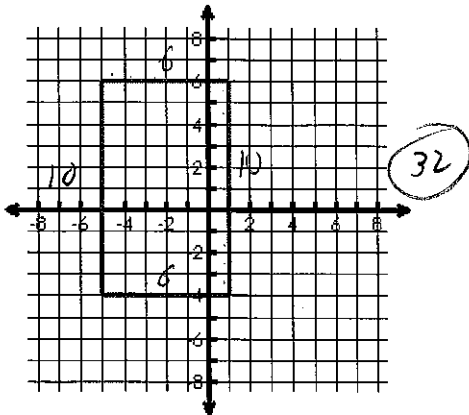
Date _____

Perimeter of Geometric Figures

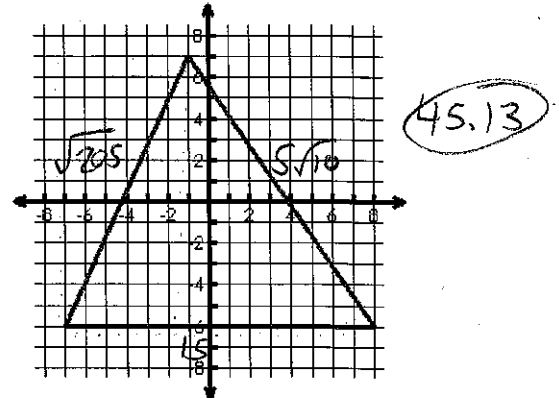
MCC9-12.G.GPE.7 Use coordinates to compute perimeters of polygons and areas of triangles and rectangles.

Find the **perimeter** of each shape. Round to 2 decimal places.

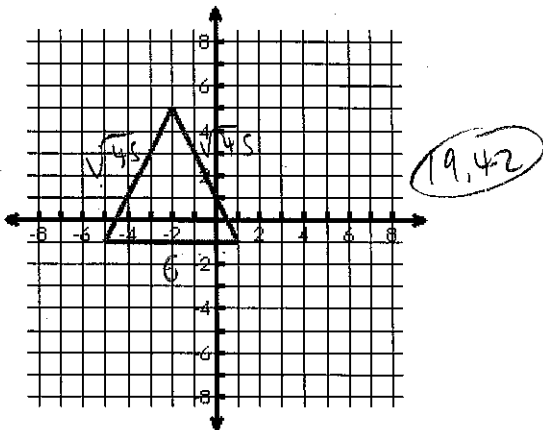
1.



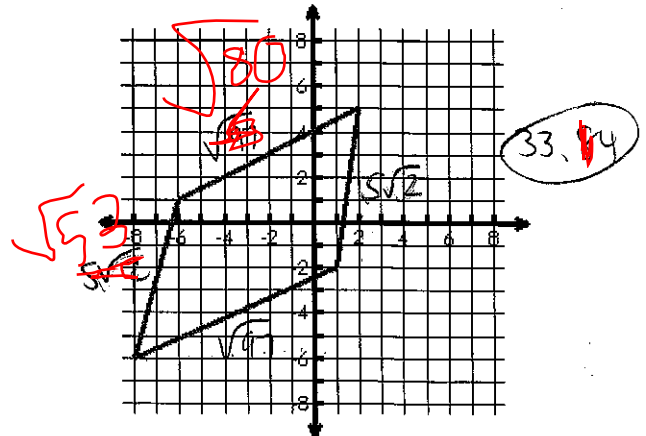
2.



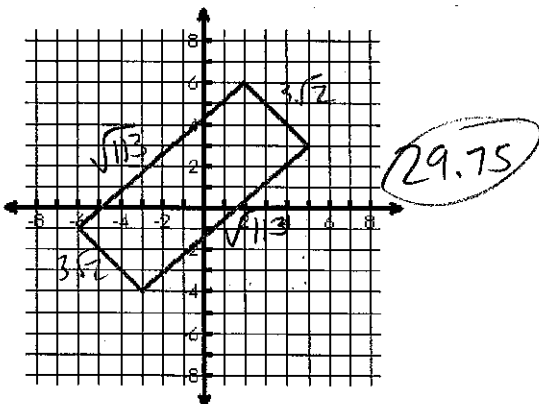
3.



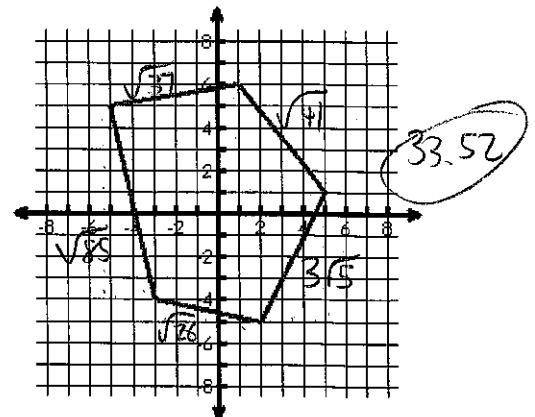
4.



5.



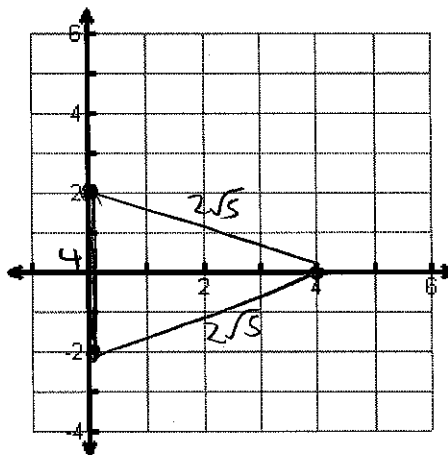
6.



Plot the given points and find the **perimeter** of each shape. Round to 2 decimal places.

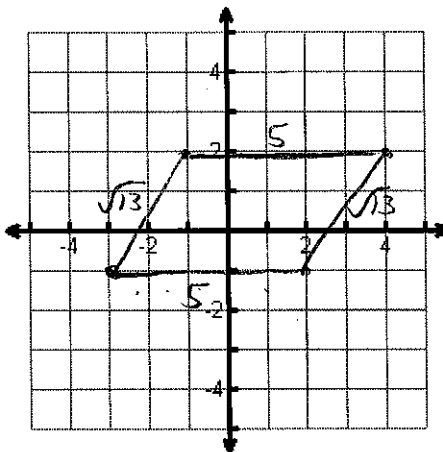
7. $A(0, -2), B(0, 2), C(4, 0)$

Perimeter: $4 + 4\sqrt{5}$
 12.94



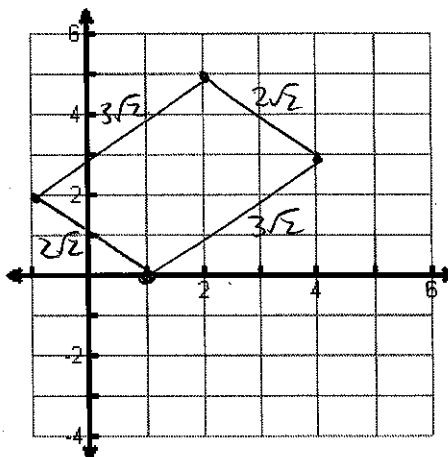
8. $W(-3, -1), X(-1, 2), Y(4, 2), Z(2, -1)$

Perimeter: $10 + 2\sqrt{13}$
 17.21



9. $S(1, 0), R(-1, 2), G(2, 5), B(4, 3)$

Perimeter: $10\sqrt{2}$
 14.14



Name Key

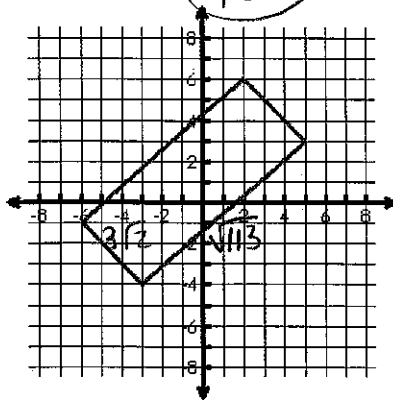
Date _____

Area of Geometric Figures - Homework

Find the **area** of each shape. Round to 2 decimal places.

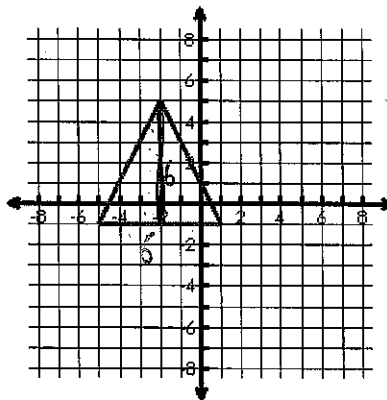
10.

45.10



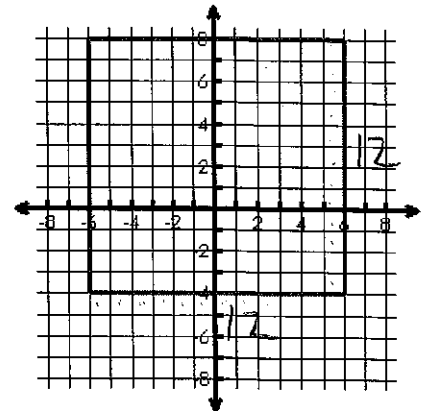
11.

$\frac{1}{2}(6)(6) = 18$



12.

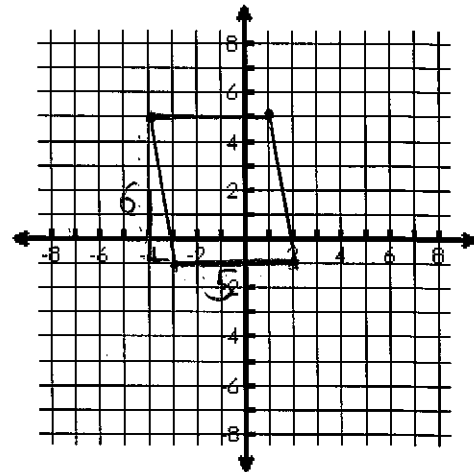
$12(12) = 144$



Plot the given points and find the **area** of each shape. Round to 2 decimal places.

13. A (-4, 5), B (1, 5), C (2, -1), D (-3, -1)

Area = 30



$5(6) = 30$

14. A (-1, 5), B (2, -1), C (-2, -3), D (-3, 4)

Area =

22.5

$\frac{1}{2}(\sqrt{5} + 2\sqrt{5})(3\sqrt{5})$

